



# Simulation: The “Special Effects” of Science

Louisiana Tech University  
Engineering & Science Day  
4-25-12



## Special Effects Video:

[http://www.youtube.com/watch?v=COS5XIH\\_R08&feature=related&fb\\_source=message](http://www.youtube.com/watch?v=COS5XIH_R08&feature=related&fb_source=message)



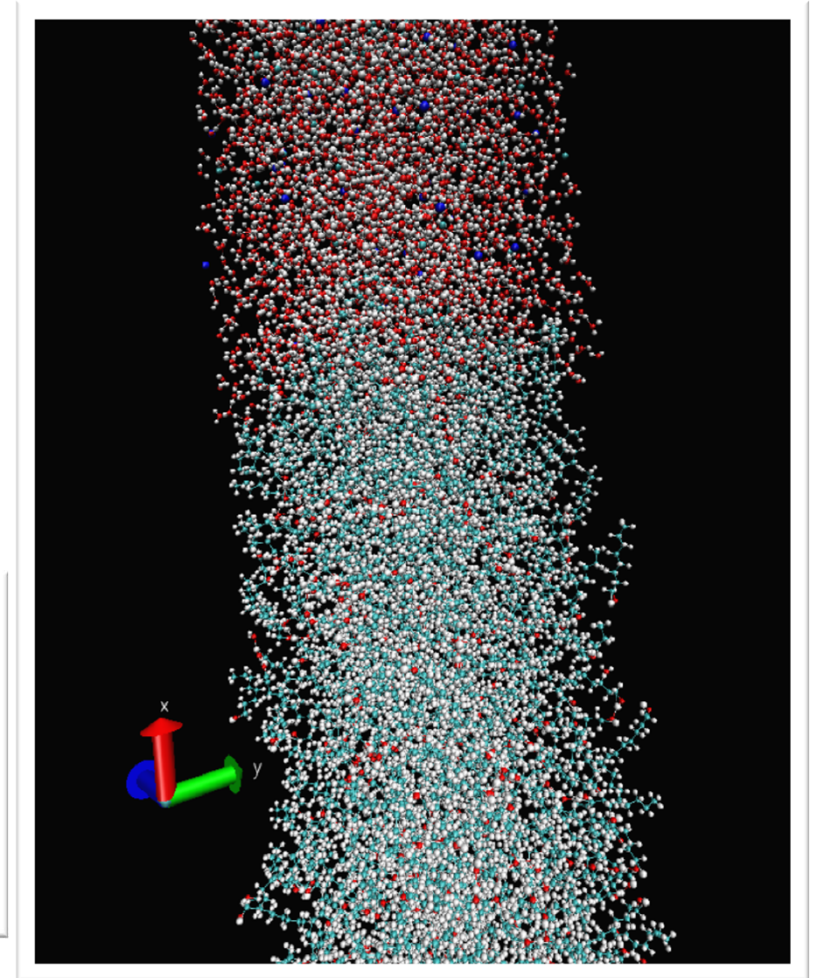
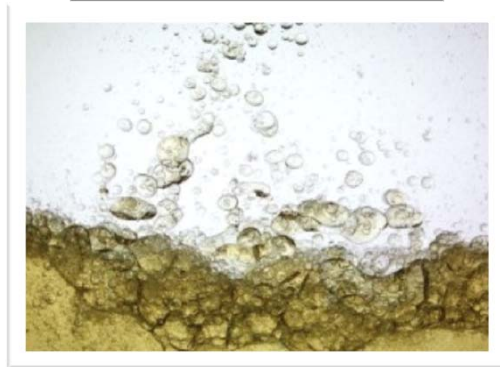
# Why simulation?



# LA-SIGMA

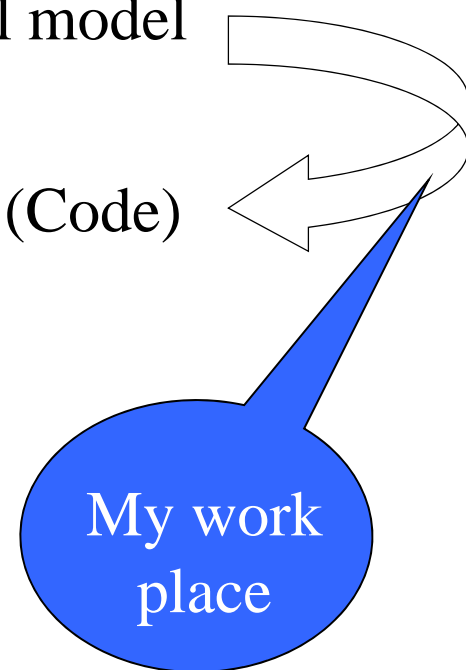
Louisiana Alliance for Simulation-Guided Materials Applications

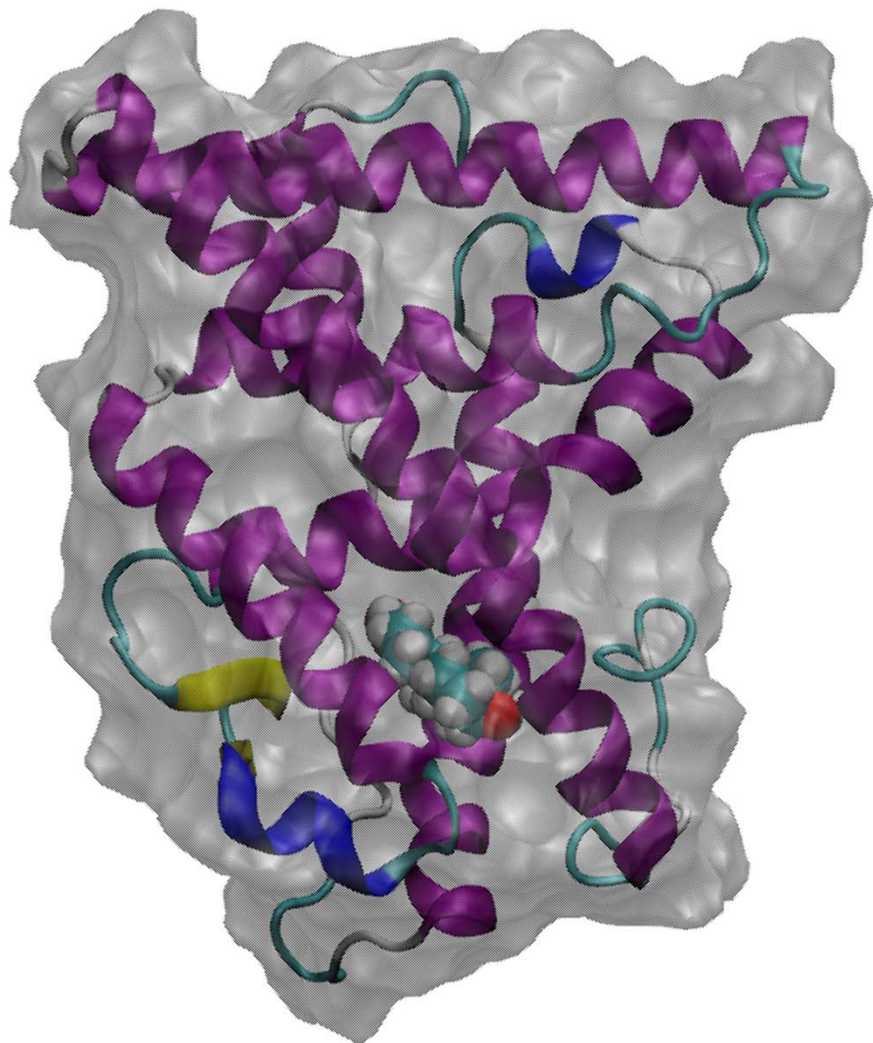




Experiments  $\implies$  Theory  $\implies$  Mathematical model

Simulation  $\longleftarrow$  Program (Code)





Today's Activity:

- 1.) Build a physical model.
- 2.) Practice simulation.



# Thank You!



*This material is based upon work supported by the National Science Foundation under the NSF EPSCoR Cooperative Agreement No. EPS-1003897 with additional support from the Louisiana Board of Regents.*



# Image References:

1. [http://en.wikipedia.org/wiki/File:World\\_map.jpg](http://en.wikipedia.org/wiki/File:World_map.jpg)
2. <https://www.llnl.gov/news/newsreleases/2008/NR-08-06-02.html>

